








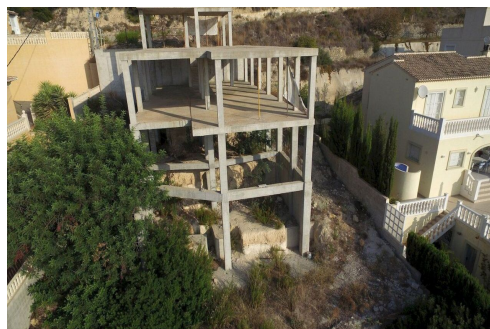
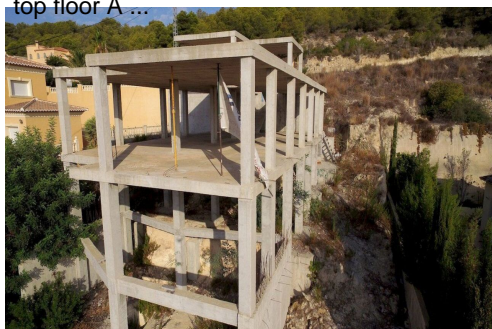
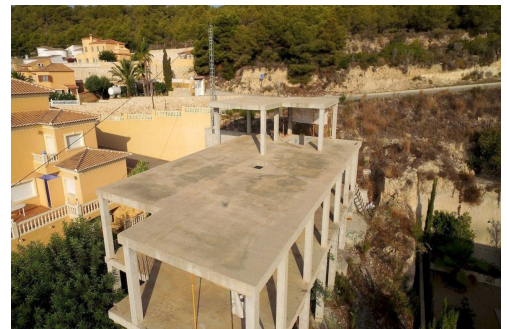
SP8902

Price: 1,925,000€



-  **Villa**
-  **Calpe**
-  **4 Bedrooms**
-  **4 Bathrooms**
-  **263m² Build Size**
-  **802m² Plot Size:**
-  **Pool: Yes**

IN CALPE WE LOCATE THIS SPECTACULAR VILLA WITH PANORAMIC VIEWS OF THE SEA, CALPE AND THE PEÑÓN D'IFACH. LOCATION: The house is located in a very quiet area of the town in Calpe, which enjoys spectacular views. Very well connected just 5 minutes from the AP-7 motorway and the town of Calpe, 20 minutes from Benidorm and 45 from the Airport in Alicante. One of its advantages is its proximity to a wide range of leisure activities, such as the Ifach Golf Course, the Real Club Náutico de Calpe, the beaches just 10 minutes away and a wide variety of entertainment venues and restaurants. HOUSING: This villa with a constructed area of 263 m² is built on a plot of 802 m, offering beautiful views of the sea, the Peñón d'Ifach and over Calpe. It is distributed over 3 floors, connected to each other with internal stairs and elevator. From the entrance through automatic doors, we access directly to the entrance of the garage on the top floor ...



vista diurna