




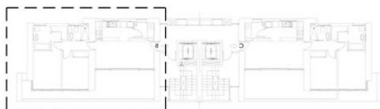


SP8678

Price: 255,000€

-  **Apartment**
-  **Benidorm**
-  **2 Bedrooms**
-  **2 Bathrooms**
-  **Pool: No**



TIPO B

Tipo B				Sup. Construida			
Sup. Cerrada	Terraza Cubierta	Total		Sup. Cerrada	Terraza Cubierta	Els. Comunes	Total
55.50 m2	20.82 m2	76.32 m2		70.78 m2	26.74 m2	35.17 m2	132.69 m2

ESCALA 1:50

PRE-SALES OFFER!!! NEW BUILD :: 2 BEDROOM APARTMENTS 500m FROM THE BEACH IN BENIDORM Modern apartment complex in an exceptional location in BENIDORM. The promenade is just a few minutes walk from the complex and the main shopping areas are also all around the development, finding supermarkets and restaurants a few minutesâ€™ walk. The complex is made up of a 22-storey building comprising (all) 2-bedroom apartments, with various orientations and different design options. The launch prices of the apartments start in and around â‚¬ 220,000 + VAT. This boutique â€œresidentialâ€ complex is a tower, slender and different. Simple and ambitious building. Forty-four houses full of light and joy. Forty-four homes ready to live, with an outdoor terrace. Just 2 homes per floor! Location This residential complex has a strategic location in Benidorm. It is close to the main levante beach promenade which provides a good connection to anywhere in the city...

