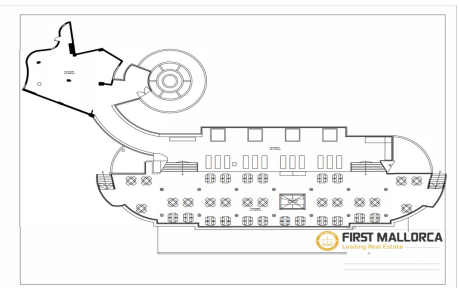
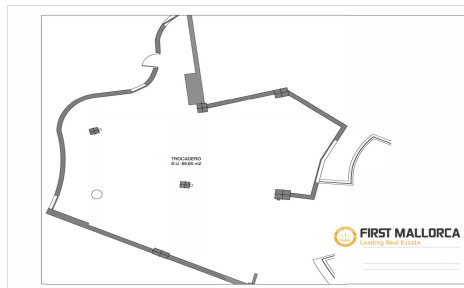
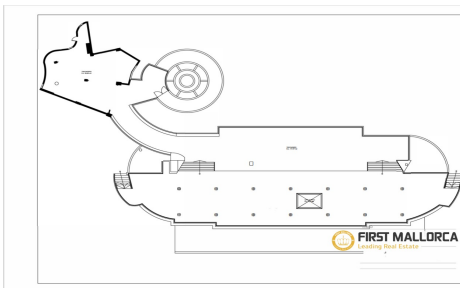


€1,585,000

YMS24946Y



Land a Plots in Arenal a Can Pastilla



0



0



N/A



N/A



N/A

We are pleased to present an outstanding building project in a truly unbeatable location – right on the seafront of Arenal, one of Palma's most popular coastal areas. Property Highlights: Prime First-Line Beachfront Location Located directly on the promenade, this property enjoys high foot traffic and maximum visibility in a vibrant coastal setting. Generous Surface Area The property offers approx. 720 m² of tiled space, including an enclosed commercial unit of around 90 m², spacious front terraces, and access areas. Additionally, it includes a private rear terrace of 135 m² for exclusive use (not part of the titled area), resulting in a total usable area of 855 m². Commercial License & Development Potential The premises hold... (Ask for More Details!)