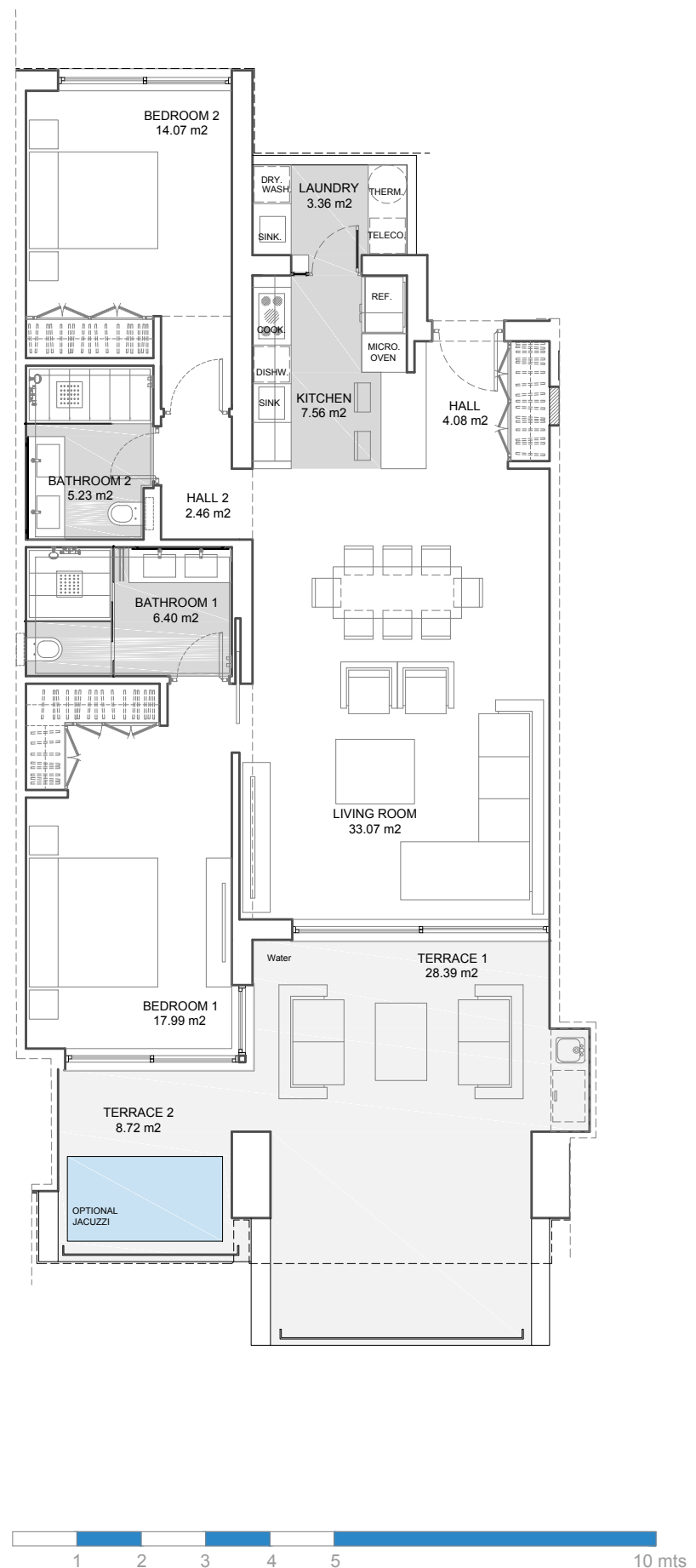


APARTMENT 03.0.2

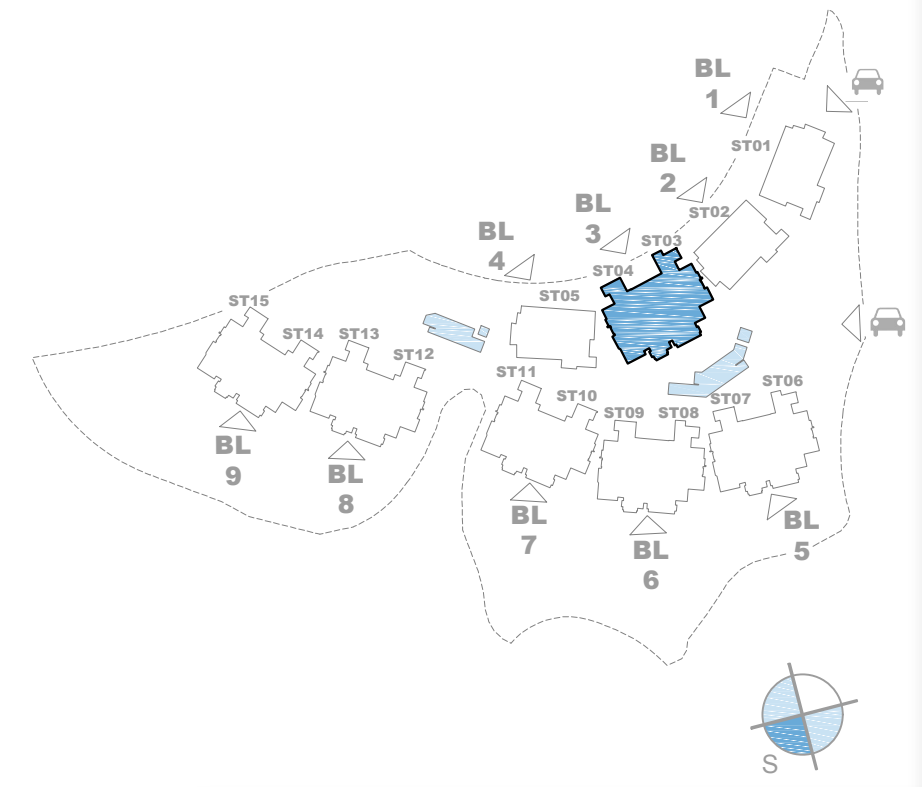
2 BEDROOMS



E: 1/100



Site Plan



Block 3 - Stairway 3

	Solarium 04.2.1	Solarium 03.2.1	
	04.2.1	03.2.1	
04.1.2	04.1.1	03.1.2	03.1.1
04.0.2	04.0.1	03.0.2	03.0.1
ST 04		ST 03	

110,31 m²

40,78 m²

Apartment 03.0.2 - 2 Bedrooms

Indoor Usable Area 94,22 m²
Terrace Usable Area 37,11 m²

Total Usable Area 131,33 m²

Indoor Constructed Area 110,31 m²
Terrace Constructed Area 40,78 m²

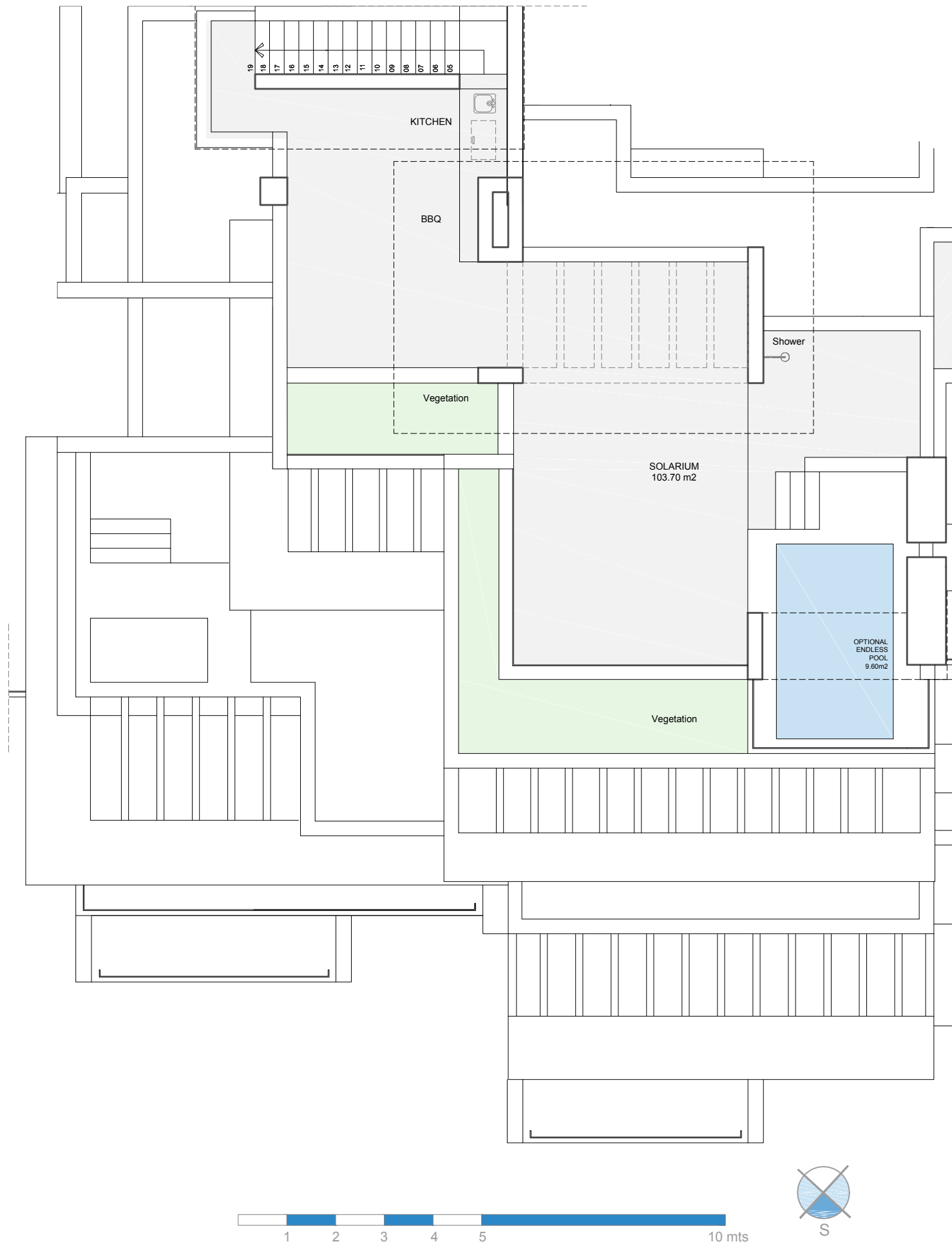
Total Constructed Area 151,09 m²

This document is for information only. The areas and measurements shown are approximate and may be modified for technical reasons and/or administrative issues. All furniture shown is for illustrative purposes.
* Apartment Code - Stairway - Floor - Apartment

PALO ALTO OJÉN - MARBELLA

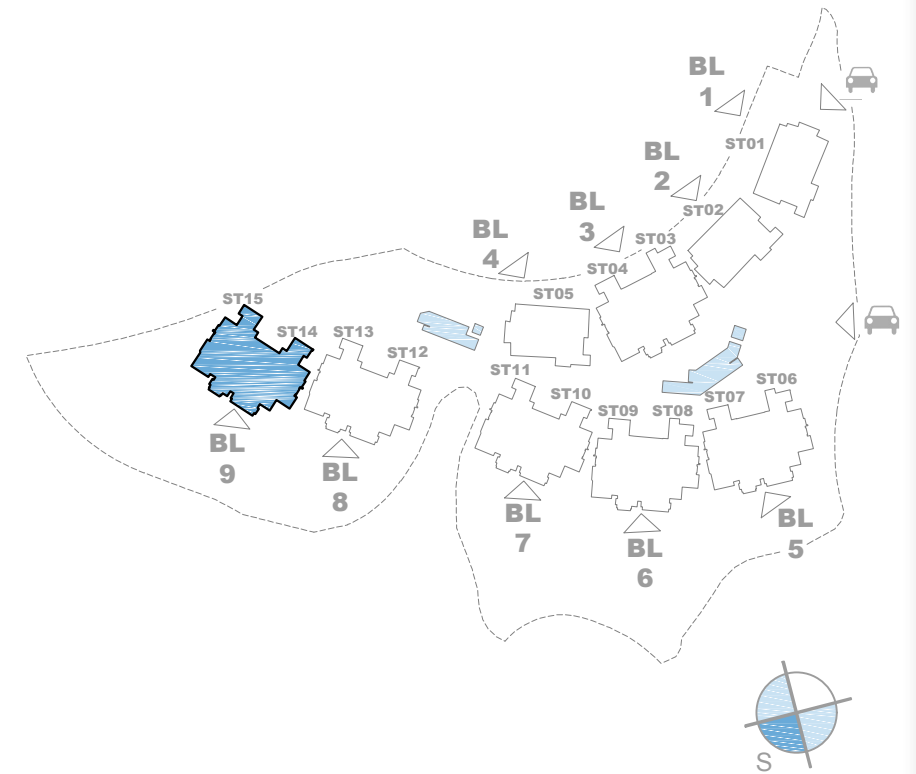
SOLARIUM 15.2.1

This document is for information only. The areas and measurements shown are approximate and may be modified for technical reasons and/or administrative issues. All furniture shown is for illustrative purposes.
* Apartment Code: Stairway - Floor - Apartment



E: 1/100

Site Plan



Block 9 - Stairway 15

	15.3.1 Solarium	14.3.1 Solarium	
	15.2.1	14.2.1	
15.1.2	15.1.1	14.1.2	14.1.1
15.0.2	15.0.1	14.0.2	14.0.1
	BS 15	BS 14	

Solarium 15.2.1

Indoor Usable Area	000,00 m ²
Terrace Usable Area	103,70 m ²

Total Usable Area 103,70 m²

Indoor Constructed Area	000,00 m ²
Terrace Constructed Area	131,79 m ²

Total Constructed Area 131,79 m²

APARTMENT 15.2.1

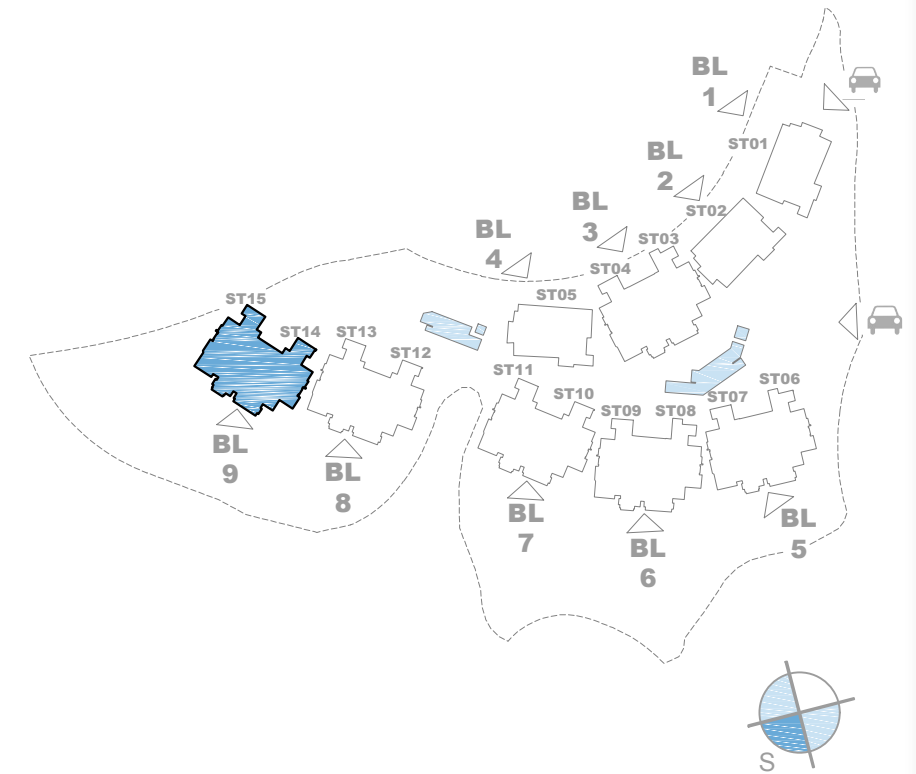
3 BEDROOMS



This document is for information only. The areas and measurements shown are approximate and may be modified for technical reasons and/or administrative issues. All furniture shown is for illustrative purposes.
* Apartment Code - Stairway - Floor - Apartment

E: 1/100

Site Plan



Block 9 - Stairway 15

	15.3.1 Solarium	14.3.1 Solarium	
	15.2.1	14.2.1	
15.1.2	15.1.1	14.1.2	14.1.1
15.0.2	15.0.1	14.0.2	14.0.1
ST 15		ST 14	



144,65 m²



115,54 m²



Apartment 14.2.1 - 3 Bedrooms

Indoor Usable Area	120,05 m ²
Terrace Usable Area	100,12 m ²

Total Usable Area 220,17 m²

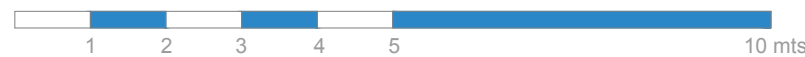
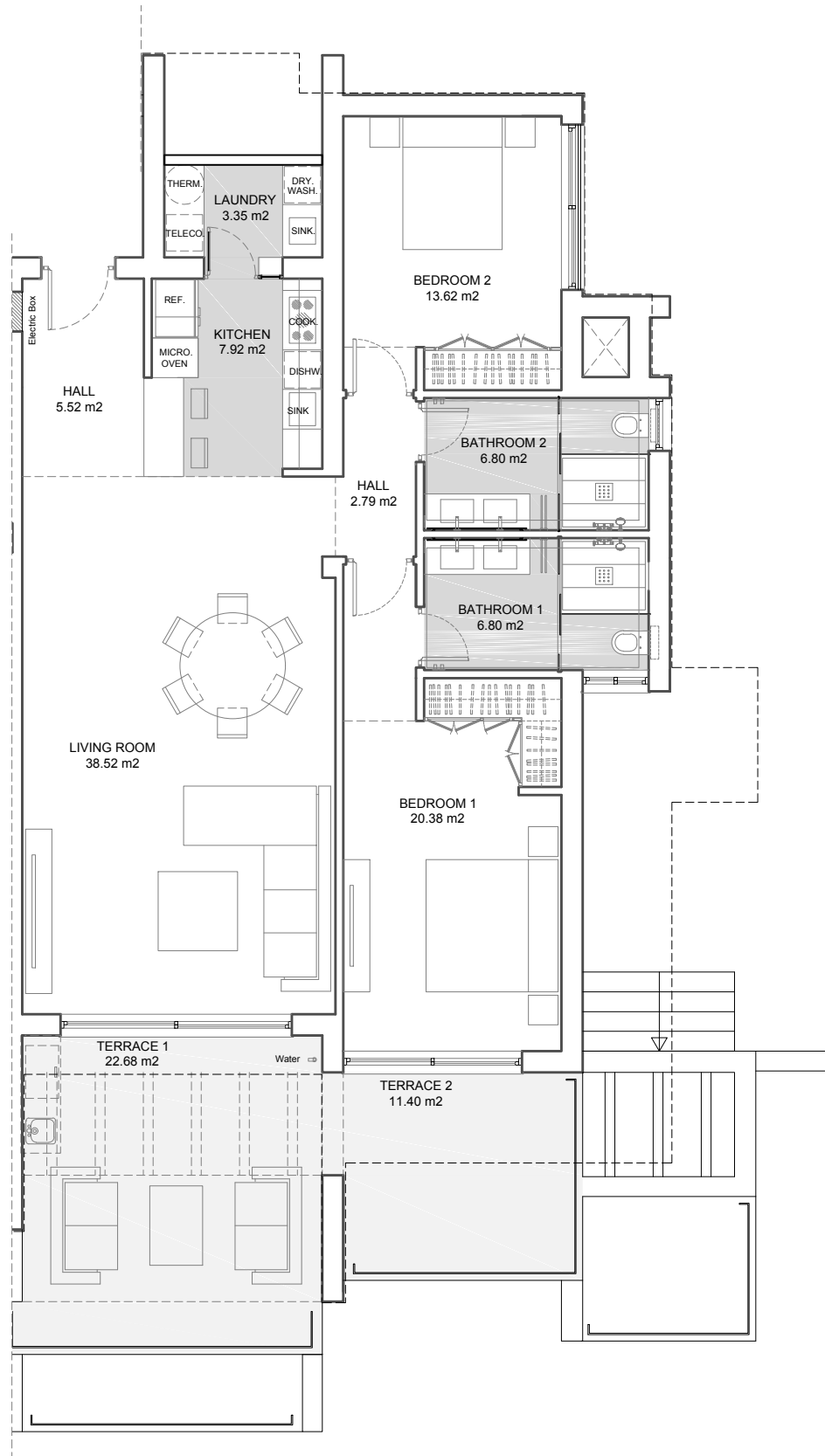
Indoor Constructed Area	144,65 m ²
Terrace Constructed Area	115,54 m ²

Total Constructed Area 260,19 m²



APARTMENT 02.1.1

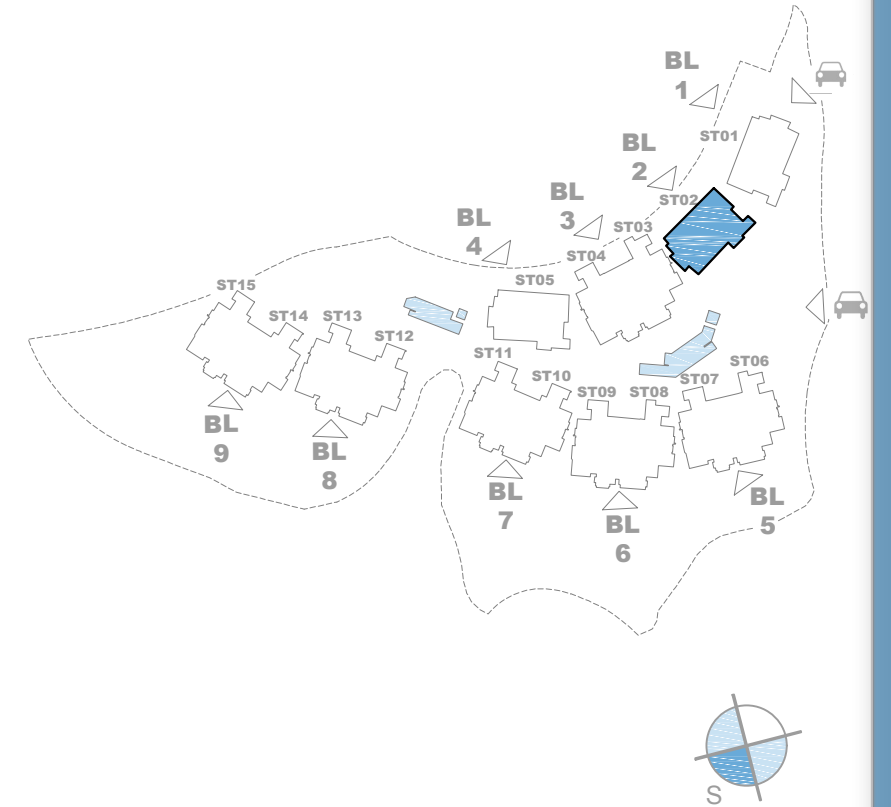
2 BEDROOMS



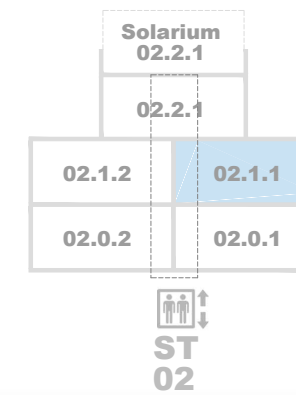
E: 1/100



Site Plan



Block 2 - Stairway 2



124,76 m²

36,91 m²

Apartment 02.1.1 - 2 Bedrooms

Indoor Usable Area 105,70 m²
Terrace Usable Area 34,08 m²

Total Usable Area 139,78 m²

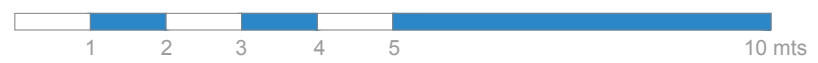
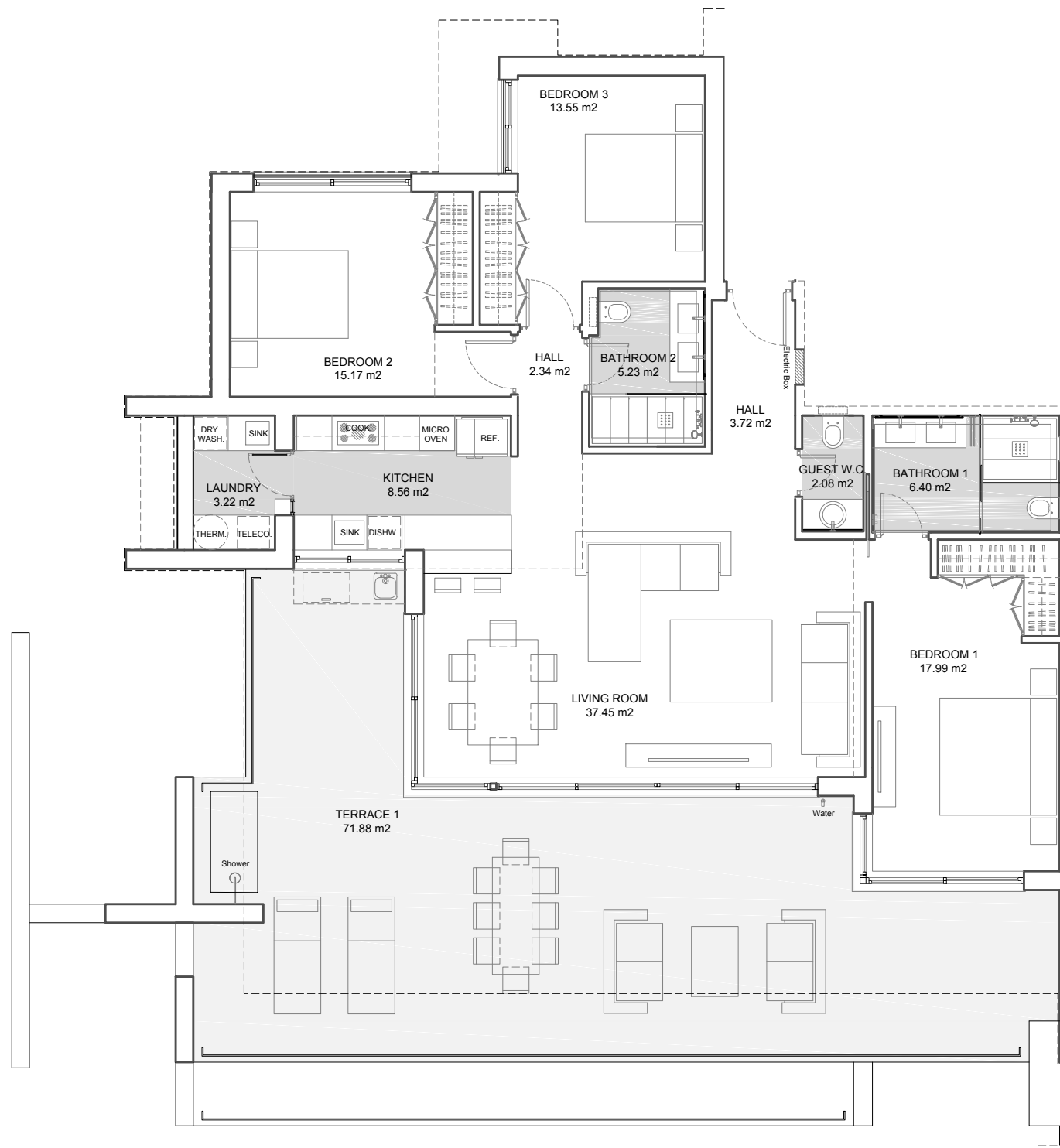
Indoor Constructed Area 124,76 m²
Terrace Constructed Area 36,91 m²

Total Constructed Area 161,67 m²



APARTMENT 02.1.2

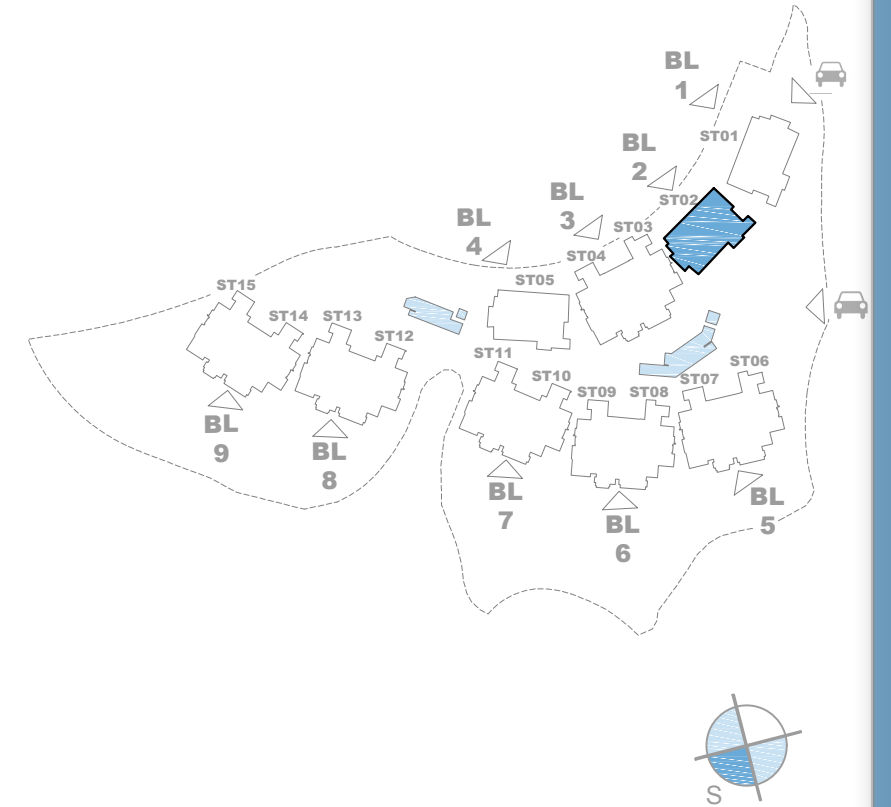
3 BEDROOMS



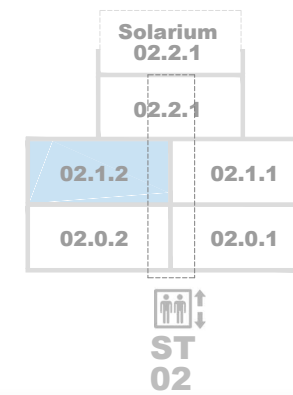
E: 1/100



Site Plan



Block 2 - Stairway 2



138,57 m²

73,65 m²



Apartment 02.1.2 - 3 Bedrooms

Indoor Usable Area 115,71 m²
 Terrace Usable Area 71,88 m²

Total Usable Area 187,59 m²

Indoor Constructed Area 138,57 m²
 Terrace Constructed Area 73,65 m²

Total Constructed Area 212,22 m²



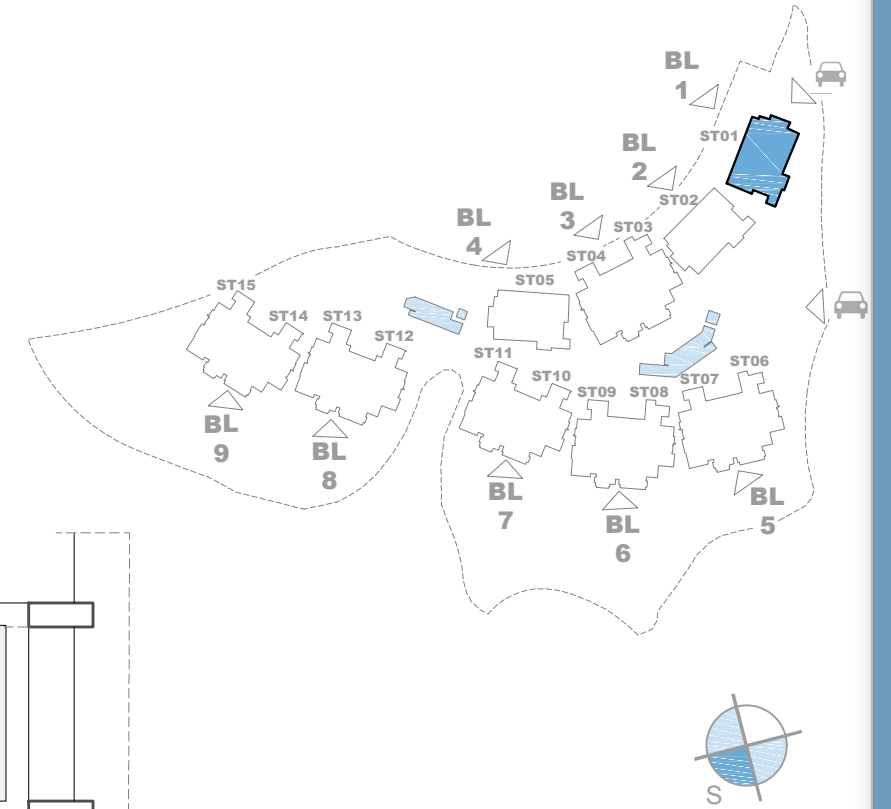
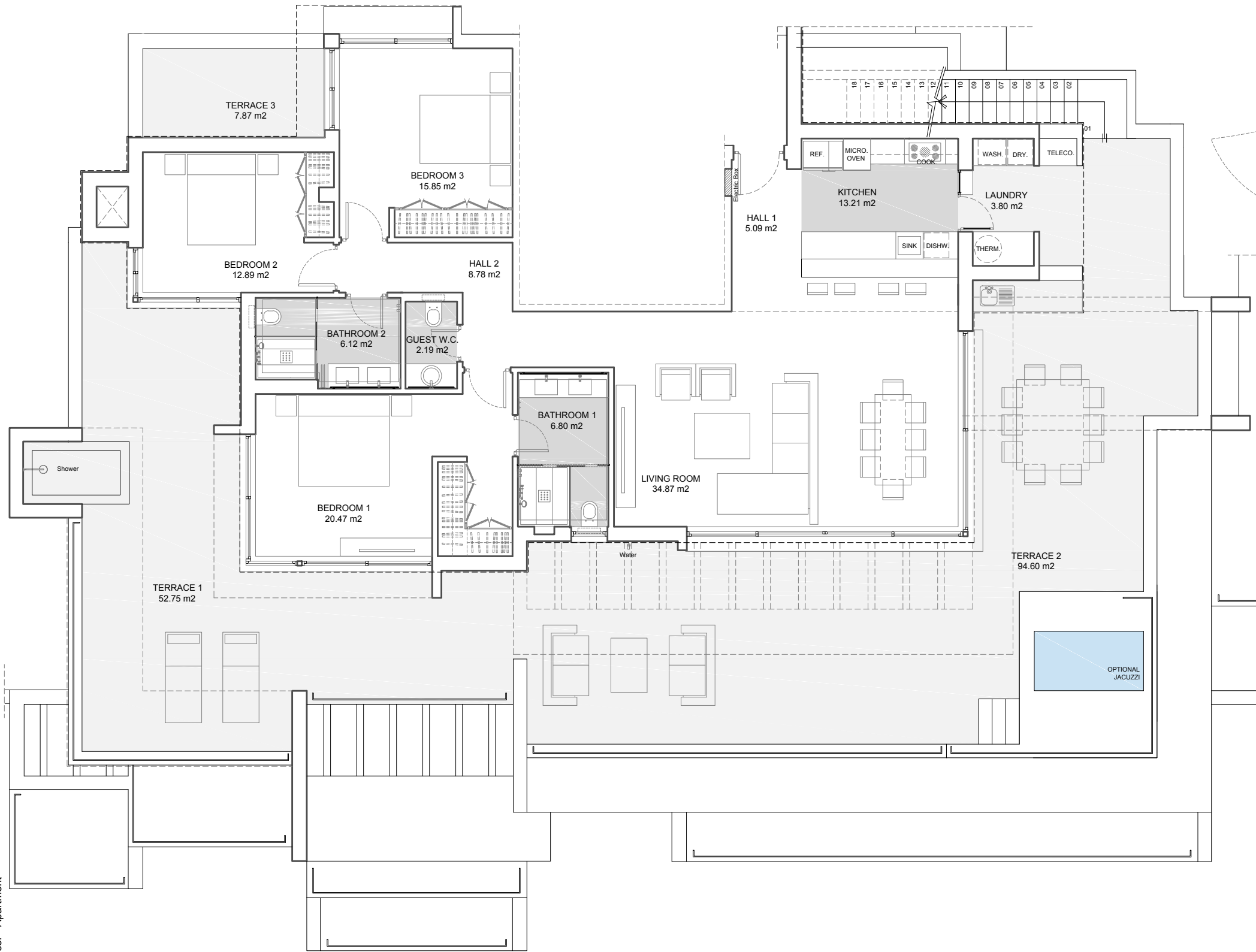
This document is for information only. The areas and measurements shown are approximate and may be modified for technical reasons and/or administrative issues. All furniture shown is for illustrative purposes.
 * Apartment Code: Stairway - Floor - Apartment

APARTMENT 01.2.1

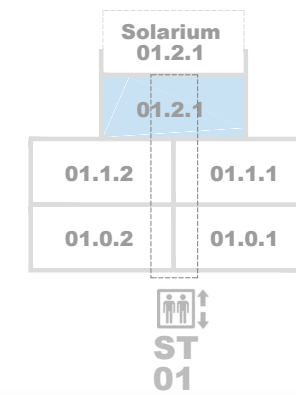
3 BEDROOMS

Site Plan

This document is for information only. The areas and measurements shown are approximate and may be modified for technical reasons and/or administrative issues. All furniture shown is for illustrative purposes.
* Apartment Code - Stairway - Floor - Apartment



Block 1 - Stairway 1



153,77 m²



183,96 m²



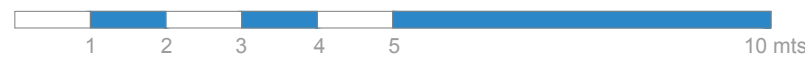
Apartment 01.2.1 - 3 Bedrooms

Indoor Usable Area 126,27 m²
Terrace Usable Area 159,02 m²

Total Usable Area 285,29 m²

Indoor Constructed Area 153,77 m²
Terrace Constructed Area 183,96 m²

Total Constructed Area 337,73 m²

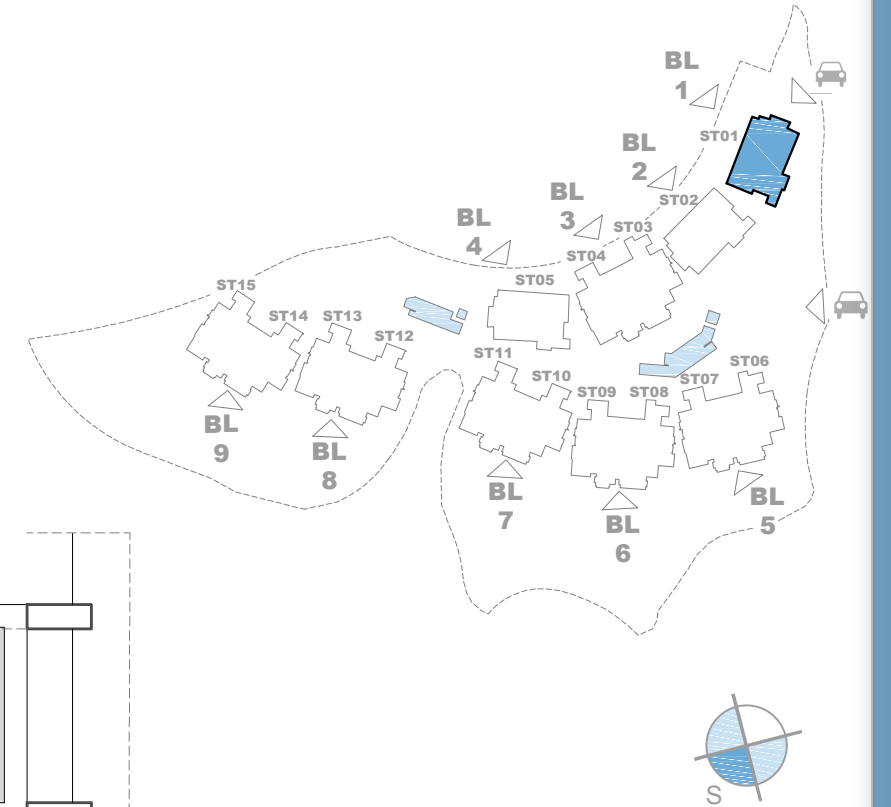
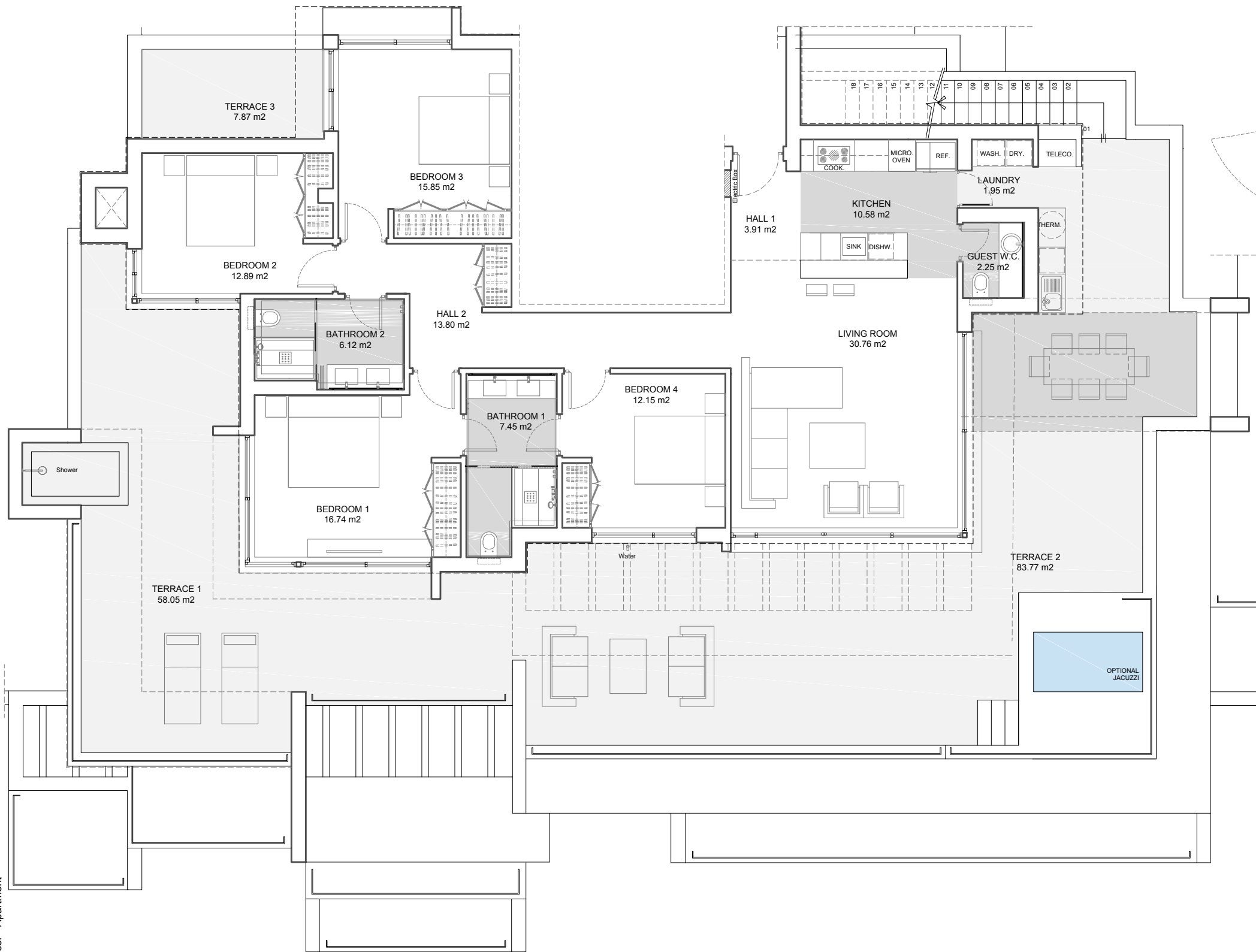


E: 1/100

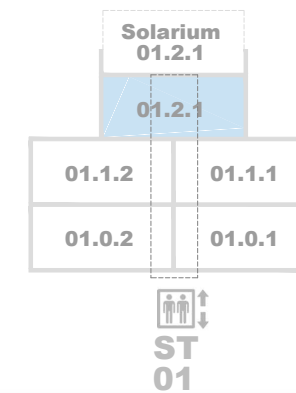
APARTMENT 01.2.1

4 BEDROOMS

Site Plan



Block 1 - Stairway 1



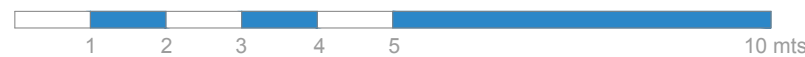
Apartment 01.2.1 - 4 Bedrooms

Indoor Usable Area 132,50 m²
Terrace Usable Area 159,02 m²

Total Usable Area 291,52 m²

Indoor Constructed Area 157,16 m²
Terrace Constructed Area 181,85 m²

Total Constructed Area 339,01 m²



E: 1/100

This document is for information only. The areas and measurements shown are approximate and may be modified for technical reasons and/or administrative issues. All furniture shown is for illustrative purposes.
* Apartment Code - Stairway - Floor - Apartment



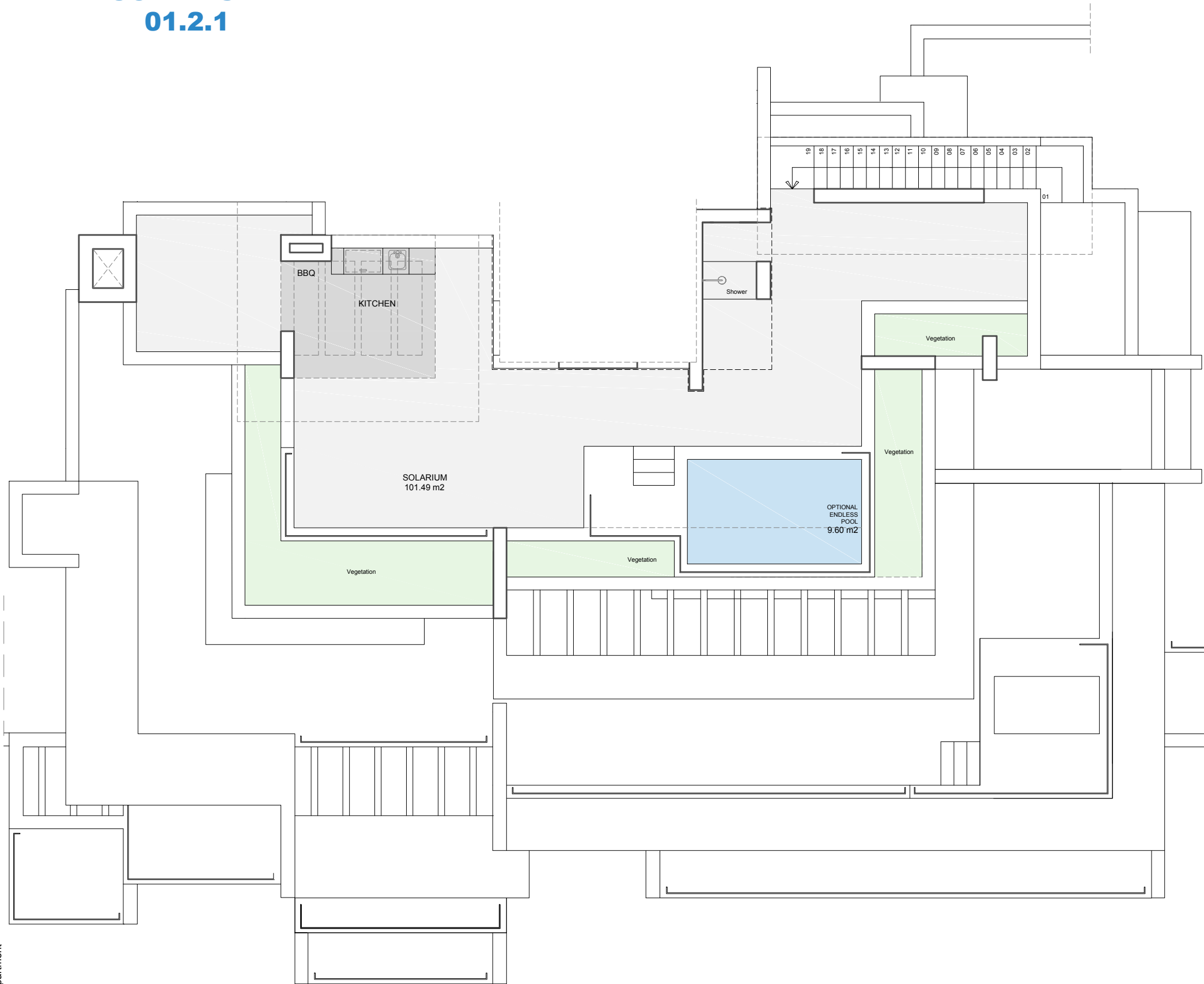
155,88 m²



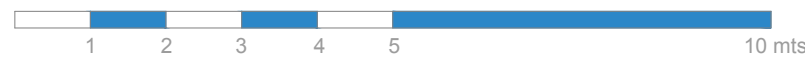
180,57 m²



SOLARIUM 01.2.1



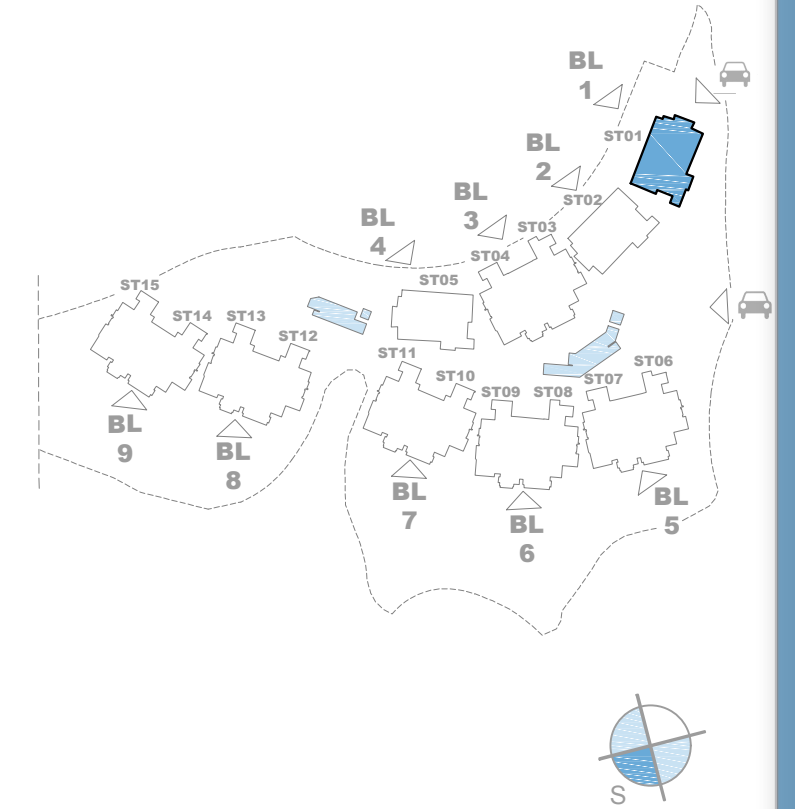
This document is for information only. The areas and measurements shown are approximate and may be modified for technical reasons and/or administrative issues. All furniture shown is for illustrative purposes.
* Apartment Code - Stairway - Floor - Apartment



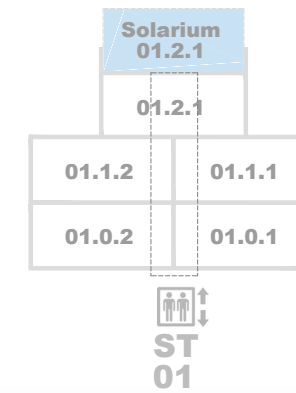
E: 1/100



Site Plan



Block 1 - Stairway 1



Solarium 01.2.1

Indoor Usable Area	0,00 m ²
Terrace Usable Area	101,49 m ²

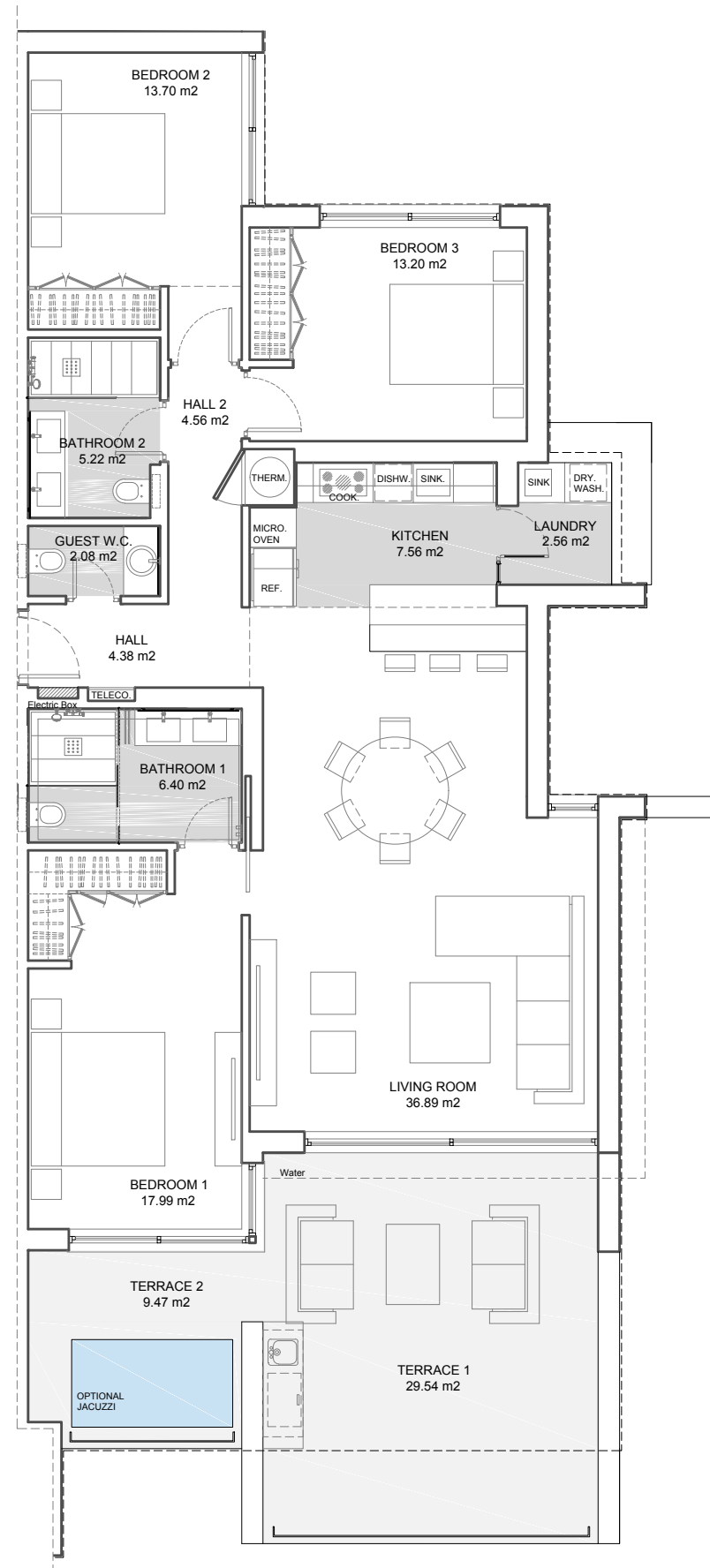
Total Usable Area 101,49 m²

Indoor Constructed Area	0,00 m ²
Terrace Constructed Area	128,88 m ²

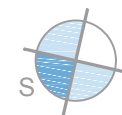
Total Constructed Area 128,88 m²

APARTMENT 03.0.1

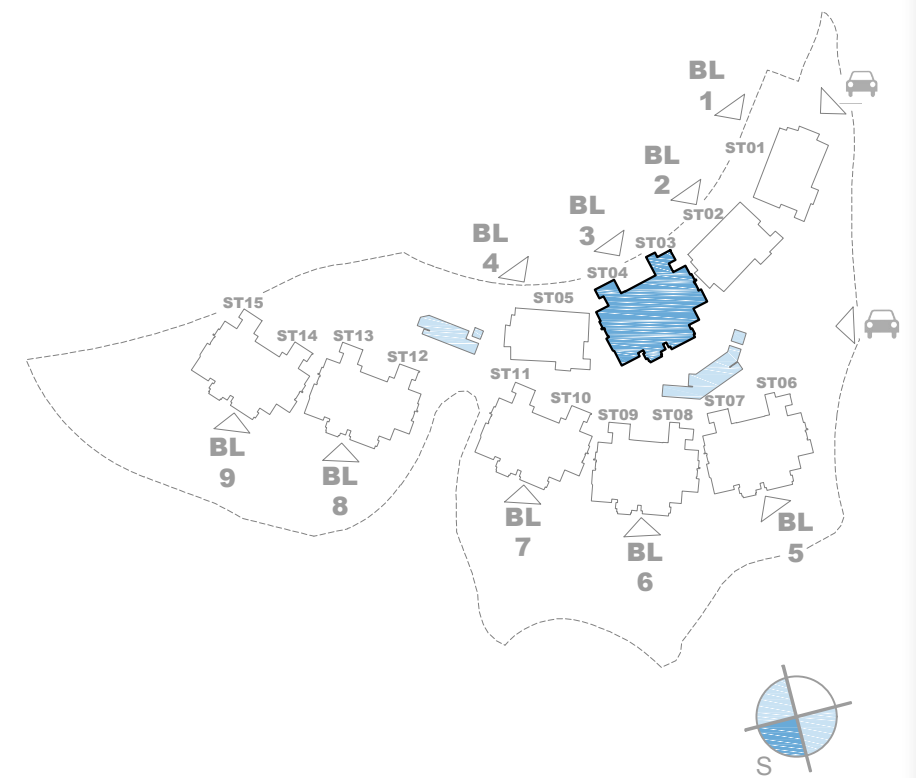
3 BEDROOMS



E: 1/100



Site Plan



Block 3 - Stairway 3



137,77 m²



42,46 m²



	Solarium 04.2.1	Solarium 03.2.1	
	04.2.1	03.2.1	
04.1.2	04.1.1	03.1.2	03.1.1
04.0.2	04.0.1	03.0.2	03.0.1
ST 04		ST 03	

Apartment 03.0.1 - 3 Bedrooms



Indoor Usable Area	114,54 m ²
Terrace Usable Area	39,01 m ²

Total Usable Area 153,55 m²

Indoor Constructed Area	137,77 m ²
Terrace Constructed Area	42,46 m ²

Total Constructed Area 180,23 m²

